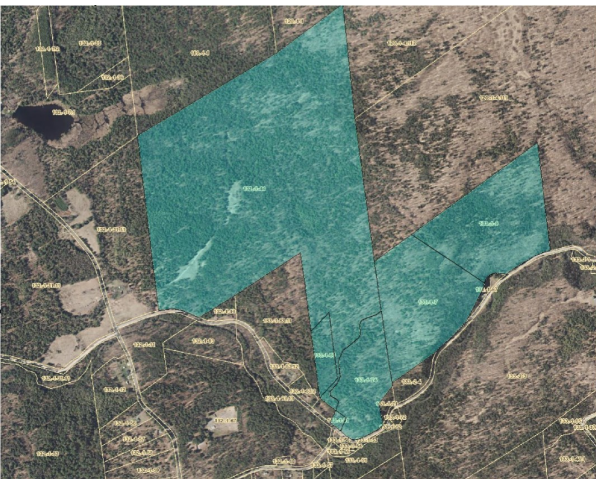


CATRA

Land Use Guidelines

1. All members, guests and their sponsoring member, must sign in at the kiosk when entering the property.
2. Ride on marked trails only. No riding on the driveway. Limit speed to 1st gear in parking areas and around the pavilion.
3. Stay on bridges when crossing creeks. Respect our wetlands.
4. Ride within your ability. Helmets, eye protection and over-the-ankle boots are required. More protective equipment is highly recommended.
5. Be prepared in the event of a breakdown on the trail or an emergency. Emergency contacts are posted at the sign-in kiosk.
6. Follow directional arrows. Slower riders keep right, faster riders use caution when passing. Use common sense. Never ride trails in the opposite direction.
7. All riders under age 18 must have parent or guardian present while riding. Minors should not ride alone.
8. Ride only on CATRA property. Respect our neighbors' boundaries. Property lines are posted on all sides.
9. Be courteous to our neighbors, do not argue or threaten. Report complaints to club officers.
10. When encountering non-member riders on CATRA property, do not argue or threaten. Give them information about CATRA and invite them to join.
11. When camping, keep fires to a reasonable size and in a safe area. Metal fire pits are available. No open fires are allowed when DEC, County, or State declares a hazard due to severe dry conditions or burn ban. Fires shall not be left unattended and shall be extinguished prior to leaving CATRA. Burning anything other than wood is prohibited.
12. CATRA property is not to be used for long-term storage of your camper/RV/tent. Overnight and weekend camping is acceptable. Longer durations must be approved by the President. Camping trailers/RVs must have current registered plates. Owner contact information must be posted on the camper/RV or at the campsite, as applicable. Campsites must be de-staged and campers/RVs/tents removed before October 1st. Camp at your own risk – CATRA is not responsible for property damage or theft.
13. Target shooting is never allowed. Deer hunting is allowed, but never on Sundays or when other members are riding.
14. Do not litter. There is no trash service available on CATRA property. If you bring it in, bring it out.



15. CATRA stickers are for member identification. New members will receive one large (vehicle) sticker and small (bike) stickers for each bike in their membership. Renewing members will receive one large sticker and additional bike stickers upon request.
16. Drinking and driving or drinking and riding on CATRA property will not be tolerated. Excessive drinking and/or disorderly conduct is prohibited. This is a family-oriented club.
17. Casual riding during major club events may be restricted. Restrictions will be posted in the club newsletter.